


**REFRIGERANT**
**DOT-39 NON-REFILLABLE CYLINDERS**

**STANDARD SPECIFICATIONS**

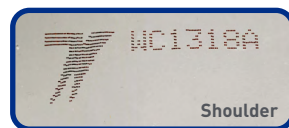
MODEL	7.5 INCH		9.5 INCH		12 INCH
HEIGHT (IN)	14.6		16.4		17.6
WATER CAPACITY (LBS)	15.8		29.7		49.6
DIAMETER (IN)	7.5		9.5		12
CYLINDER VOLUME (CU. IN)	438		822		1,378
<b>STANDARD SPECIFICATION</b>					
SERVICE PRESSURE (PSIG)	260		260		260
TEST PRESSURE (PSIG)	325		325		325
<b>OPTIONAL SPECIFICATION</b>					
SERVICE PRESSURE (PSIG)	400	320	400	320	320
TEST PRESSURE (PSIG)	500	400	500	500	400

All dimensions are approximate.


**Features**

- Rounded edges for safe handling
- Comfort grip for improved handling
- Arched design for light weight, enhanced durability and increased strength
- Wide 3.2" opening for easy valve access and filling

**Stamps Of Authenticity**  
Guaranteed Quality.  
Guaranteed Worthington.


**Container Color Guidelines**

Worthington complies with AHRI Guideline N which states all refrigerant containers will be painted PMS 413. Per SAE, containers with R-134a Automotive will remain PMS 2975. Containers with flammable refrigerant will have a red band on the shoulder.



For more information, contact a Worthington Industries representative today.

200 OLD WILSON BRIDGE ROAD  
COLUMBUS, OHIO 43085  
614.438.3013

TOLL-FREE: 866.928.2657  
CYLINDERS@WORTHINGTONINDUSTRIES.COM  
WORTHINGTONINDUSTRIES.COM/REFRIGERANTS


**REFRIGERANT**
**DOT-39 NON-REFILLABLE CYLINDERS**

**METRIC SPECIFICATIONS**

MODEL	7.5 INCH		9.5 INCH		12 INCH
HEIGHT (MM)	396.8		416.7		446
WATER CAPACITY (KG)	7.04		13.2		22.1
DIAMETER (MM)	190.5		241.3		304.8
CYLINDER VOLUME (L)	7.2		13.5		22.5
<b>STANDARD SPECIFICATION</b>					
SERVICE PRESSURE (BAR)	17.9		17.9		17.9
TEST PRESSURE (BAR)	23		23		23
<b>OPTIONAL SPECIFICATION</b>					
SERVICE PRESSURE (BAR)	27.6	22	27.6	22	22
TEST PRESSURE (BAR)	35	28	35	28	28

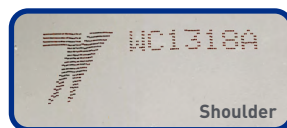
All dimensions are approximate.


**Features**

- Rounded edges for safe handling
- Comfort grip for improved handling
- Arched design for light weight, enhanced durability and increased strength
- Wide 3.2" opening for easy valve access and filling

**Stamps Of Authenticity**

Guaranteed Quality.  
Guaranteed Worthington.


**Container Color Guidelines**

Worthington complies with AHRI Guideline N, which states all refrigerant containers will be painted PMS 413. Per SAE, containers with R-134a Automotive will remain PMS 2975. Containers with flammable refrigerant will have a red band on the shoulder.



For more information, contact a Worthington Industries representative today.

200 OLD WILSON BRIDGE ROAD  
COLUMBUS, OHIO 43085  
614.438.3013

TOLL-FREE: 866.928.2657  
CYLINDERS@WORTHINGTONINDUSTRIES.COM  
WORTHINGTONINDUSTRIES.COM/REFRIGERANTS